



# MEETING ECONOMIC CHANGES

Volume 3, Issue 3

SEPTEMBER 2009

Area Erectors, Inc. providing Pre-Engineered Metal Bldgs, Pre-Cast Concrete, Structural Steel and Misc. Iron Erection services.

Locations:

Rockford      Rochelle  
Peoria        Wheeling  
Oswego       Milwaukee

**Special Points of Interest:**

- ◆ VP Retrofit Unit
- ◆ Simple Saver
- ◆ Sky Web II

**New Contracts:**

Union Pacific - Joliet  
Naperville Park District  
Bourbonnais Maint. Facility  
Rock Falls WTP

**Completed Contracts:**

Beecher Public Works  
Berkeley Public Works  
Mertel Overhead Doors  
Pro Build Remodel  
St. Mary's Parish  
TDJ Group Roof Repairs  
Waukegan Ramp Expansion

## VP Introducing Metal Retrofit/Re-Roof

Varco Pruden Buildings, one of the nation's leading providers of metal building systems and a division of BlueScope Buildings North America, Inc., has created a new business unit dedicated exclusively to roofing.

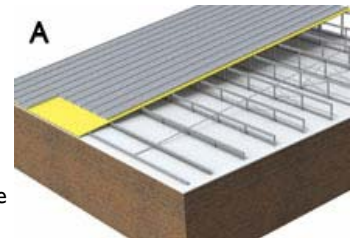
Named Varco Pruden Roof Systems, the specialized team will be staffed to specifically give independent authorized Varco Pruden builders assistance with roofing product and pricing. The team will work exclusively on roofing, with focus on re-roof, retrofit and new conventional construction projects. Building owners looking for a way to stop roof leaks, reduce maintenance cost and improve the appearance of their facility will find the answer with VP Roof Systems and Area Erectors.

Whether your current roof is a non-metal or a metal roof...flat or sloped, Varco Pruden Roof Systems can provide a solution that gives you long-term, weather-tight protection and fewer roofing headaches. Among the many benefits of a Varco Pruden retrofit or re-roof solution are:

- A roof system designed to meet the highest industry standards for quality and performance.
- A selection of panel options and architecturally attractive colors.
- The option of adding slope to flat roofs, eliminating "ponding" and problems related to standing water.
- Increased energy-efficiency with additional insulation and "cool paint" formulations.

**Built Up Slope Structural (see illustration A)** - Ideal for applications when a project requires positive roof drainage to prevent water from standing on the roof surface. A built-up slope also allows for additional insulation, improving energy-efficiency and reducing heating and cooling costs.

All structural materials are made from durable, light weight galvanized steel, can be installed over the current structure without interrupting on-going business operations, and are designed and manufactured to give years of trouble-free service.



Each Varco Pruden Roof System project combines the advantages of superior roof engineering and design with guaranteed, proven products. We are your best source for complete information and assistance with your project needs.

Let Area Erectors be your source for additional Varco Pruden Roof Systems information send your requests to: [sales@areaerectors.com](mailto:sales@areaerectors.com).

## Need a building fast? Let VP's Fast-Track program solve your problem!

VP's Fast-Track program provides you with the fastest and most efficient solution for basic buildings at an economical cost. Each Fast-Track building has the same high quality design, engineering and materials available in all of the VP product offerings. The Fast-Track program allows custom design of multi-purpose basic buildings with a number of optional features.

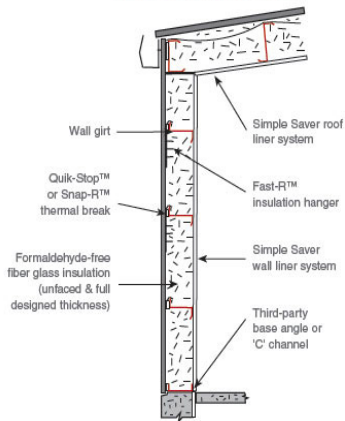


Fast-Track buildings can be up to 250'-0" wide x 750'-0" long with an eave height to 30'-0" and your choice of roof pitch. Mixed bay spacing with a variety of roof and wall panels and finishes with other options such as canopies, rake extensions and interior liner panel systems just to name a few.

Call Mike or Jerry today to see if your project fits the Fast-Track parameters!

## SIMPLE SAVER SYSTEM

Metal Building Wall Detail

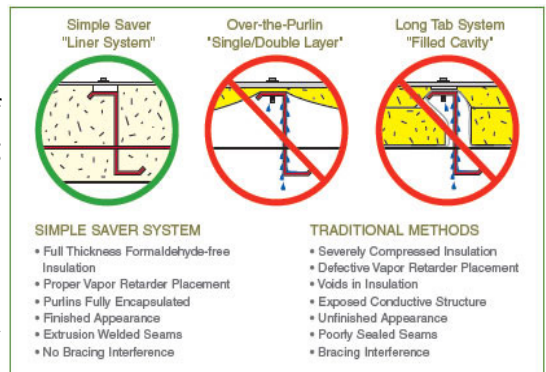


The Simple Saver System®, manufactured by Thermal Design, Inc. is designed to yield full insulation values without compression or voids common with other methods. The Simple Saver creates the uniform depth space needed for the full specified insulation thickness and delivers the maximum possible insulation performance by providing both low U-values and low emissivity values, stopping over 90% of all three types of heat transfer. Visit [www.thermaldesign.com](http://www.thermaldesign.com) for performance and technical information.

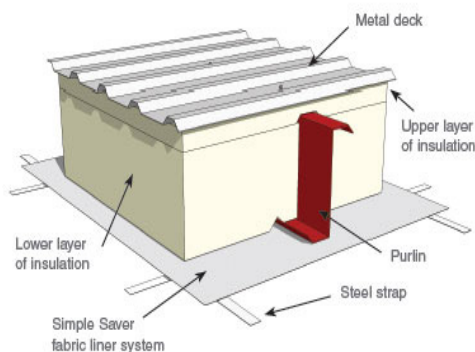
With today's high energy costs and the potential for continued increases, owners, designers, builders and the government are all focusing their attention on more energy efficient buildings. Improving the building envelope design and maximizing your insulation performance will return more value to the owner

than any other building material going into the project.

The Simple Saver System is designed to solve the defects of traditional compression insulating methods. Properly placing and sealing the liner system (vapor retarder) to create the full required insulation space will virtually eliminate insulation compression and assure the ultimate performance. The Simple Saver System® helps architects, design build contractors and owners with their goals to build energy efficient buildings and may help qualify for tax incentives, government and state rebates, in addition to LEED points.



If conventional suspended ceilings are not appropriate or not in the budget, the Simple Saver System provides an excellent yet inexpensive acoustic finish. In addition, the bright white, reflective surface is often used as an interior exposed finish, which enhances the efficiency of the lighting system. Various colors and strap patterns may be specified to obtain unique aesthetic appearances and the ceiling and wall surfaces are washable and easy to maintain. The Simple Saver System comes with a 10 year limited materials warranty.



Peck Farm Recreation Center, Geneva, IL

## AREA ERECTORS, INC.

71 Stonehill Rd., Ste. A  
Oswego, IL 60543

Phone: 630-551-7272  
Fax: 630-551-7036

Email: [sales@areaerectors.com](mailto:sales@areaerectors.com)

For your next  
Metal Building Project  
contact:

Jerry Meister  
[jerrym@areaerectors.com](mailto:jerrym@areaerectors.com)

Mike Steidel  
[mike.steidel@areaerectors.com](mailto:mike.steidel@areaerectors.com)

We're on the web!  
[www.areaerectors.com](http://www.areaerectors.com)



AUTHORIZED  
DISTRIBUTOR

VARCO PRUDEN BUILDING  
PRODUCTS

[www.vp.com](http://www.vp.com)

Continued from page 2..

Page 3

The Simple Saver System<sup>®</sup>, manufactured by Thermal Design, Inc. offers free OSHA-accepted fall protection for new pre-engineered metal buildings. Thermal Design passed stringent OSHA for the Simple Saver System<sup>®</sup> testing to earn a coveted letter of acceptance .

Most existing commercial and industrial buildings have obsolete energy systems for today's higher energy costs. Retrofitting with a Simple Saver System will effectively reduce your future energy cost and dramatically enhance the interior appearance.

Start saving today!

\*Material graphics courtesy of



Helmar Lutheran Church, Newark, IL



## Product News



Area Erectors strives to lead the industry in safety. It has long been Area's policy to make sure that all its employees follow strict safety procedures and utilize personal protective equipment. Sky Web II is a product that exceeds our safety requirements as well as offers other key benefits.

The Sky Web II Fall Protection and Insulation Support System is an innovative passive restraint system that protects workers from falls at the leading edge of a roof. It does this by providing a "web" of knotted nylon mesh that is attached to the perimeter of the roof's secondary structural members. With a minimum investment, Sky-Web II increases safety and efficiency, reduces injury, and is easy to install.

In addition to the fall protection benefits of this sturdy system, Sky Web II stays in place once the building is finished to provide an attractive retainer for the insulation.

Consider Sky Web II for your next building project.

## Mission Statement

Area Erectors mission is to provide the highest quality on-time service in order to develop and maintain profitable, long-term business relationships.

We accomplish this by providing an environment of safety, integrity and cooperation, allowing our employees to continue to develop their technical superiority as a part of our highly skilled, loyal and dedicated workforce.

As an AISC Certified Advanced Steel Erector, Area Erectors embraces and strives to achieve the quality of erection services as outlined in the AISC Code of Standard Practices.

